

**CHIMNEYVILLE WEAVERS AND SPINNERS GUILD
P.O. BOX 16888
JACKSON, MS 39236-6888
OCTOBER 2001**

OFFICERS:

President: Debbie Stringer 601-373-2495; e-mail: news@epaofms.com
Vice-President: Nancy Landrum 601-482-8823 email-Nland85863@aol.com
Secretary: Anne Hodges 601-713-2173; e-mail: aebooks@hotmail.com
Treasurer: Barbara Mitchell
601-856-1838
Librarian: Judith Noble 601-371-2777

CALENDAR

October 27-28: Pioneer Festival.
Natchez Trace
October 27: October Guild meeting
Melba Nipper's
Immediately after the
Festival.
November 10: Opening of *Inspiration*
Show at the Gravity
Coffee House and
Gallery. 5:00-7:00
November 17: Guild meeting
From the Heart-Liberty
Baptist Church. (see note)
December 8: Loom Crawl
January 5: Roc Day-Jackson
January 19: Guild meeting



The seventh annual *From the Heart* crafts show will be held on **November 17** from 9:30-4:00. Handmade items including baskets, jewelry, hand-hewn dough bowls, Ukrainian Pysanky eggs, fused glass jewelry, Peyote beadery, hand-dyed textiles, marble Christmas ornaments and pottery are among the many items you will see. Several of the participants are Craftsmen's Guild members including Leigh Everett/Peyote beadery, Elisa Ledlow and Margaret Pittman. The show will be held in a **new** location this year: **Liberty Baptist Church** on Lakeland Dr. at Luckney Rd. Admission is **FREE**.

INFORMATION!!! INFORMATION !!!

The inspiration exhibit at Gravity Coffee Shop and Gallery will be held November 5, 2001-January 5, 2002. The exhibit has been named *Hues of Inspiration: Fiber Art Inspired by Words and Music*. The opening reception will be held Saturday, November 10 from 5:00 p.m. to 7:00 p.m. Afterwards all participants and guests are invited to stay to hear the band Grant's Ferry at 7:30 at the gallery.

All exhibitors are required to fill out a consignment agreement **whether or not** the entries are for sale. The gallery requires this for insurance purposes. Contact Holly Redford.

Holly is putting together a CD of the musical pieces used for inspiration to be played during the reception. Please contact her as soon as possible to include your music.

Packs of invitations will be available at Melba's on the 27th. If you are not planning to be there, Holly will mail yours to you. Let her know ASAP.

Hues of Interpretation will close on Roc Day. It would be an ideal opportunity for our friends from other guilds to see this exhibit. Let's encourage that.

The exhibit is a rotating one; again, contact Holly to add to the exhibit or to take away pieces.

Holly can be contacted at:

601-924-5654

e-mail: HiPunkin@jam.rr.com

Let's help Holly and be in touch with her as soon as possible about these items.

Minutes September 15, 2001

The Chimneyville Weavers and Spinners Guild held its first meeting of the year on September 15, 2001 at the weaving studio.

New President Debbie Stringer called the meeting to order and welcomed Margie Harris, guest. The group then moved into a special prayer time for the nation and the international crisis begun on September 11 with the tragedy at the World Trade Center and the plane crash in Pennsylvania.

Jill Hammes presented the program on creativity. Jill spoke of her efforts in weaving and how she came to the medium of art she uses. She challenged the group to utilize colors that they did not like. She sought to inspire the weavers and spinners for the inspirations project for 2002.

At break, Kristen Redford sold white elephant tickets.

Old Business:

The president thanked Nancy Landrum for hosting the group at her country home this summer. The president reported on then reported on the Majesty of Spain tapestry tour

and noted that she sent Jack Kyle a thank-you letter. Participation was small, but the tour was a success. Margaret Pittman was thanked for hosting the group when Jackie Erickson-Schweitzer was in town.

Debbie thanked Lu for her work as president over the past two years and Lu thanked the group for their help and support and for the pin, which was given to her at the informal meeting at Nancy Landrum's.

New Business:

Dues are to be paid by October 1, 2001, for inclusion in the CWSG directory. The president expressed thanks to Marcy for volunteering to print the directories again. Committee chair assignments were handed out and Lu Harding will coordinate Pioneer Day in place of Patti Demers.

Treasurer Barbara Mitchell reported a current balance of \$2,875.24 plus today's membership fees in the CWSG active account.

Vice president/Program chairman Nancy Landrum reported on thoughts and plans regarding upcoming programs and workshops and asked for input. She also asked that surveys be returned to her today.

Roc Day 2002 report was made by co-chairs Melba Nipper and Debbie Levine. The committee reported that they had met and decided that the fee will remain at \$20.00 each. The location is the Hinds Community College Rankin facility. The date is January 5, 2001. The opening of the building will be at 7:00 a.m. The event will be from 9:00 to 4:00 and all must be out of the building by 6:00 p.m. The theme is farm related and members can plan to dress in farm attire such as jeans, overalls, or other. The CWSG sash, for those who have one, should be worn. (The sash is to be red, green, blue and purple and should be 4 inches wide and woven in any pattern.) The committee needs to do some more work on the budget and will meet again soon.

Upcoming events are the pioneer Festival that will be October 27-28. The Guild meeting will be held at night as is customary when there is a demonstration. The group agreed to do this on Saturday night to provide convenience for the out of town members since PF is two days. This was moved by Lu and seconded by Debbie and passed with no dissent. Lu's job as coordinator includes getting free lunch tickets for those who demonstrate, so please let her know if you can demo. Marva will try to get the tent she provided last year so that the group will have shade. The Saturday night meeting will be held at Melba's. The group will give out membership information to those; who are interested. The Craftsmen's guild is encouraging us to wear costume.

Holly reminded the members that show pieces for the Gravity show are due in October at the meeting. Especially inspiration pieces need to be turned in by that time. Pieces can be for show only and not for sale. The commission to Gravity on sale pieces is 40%. If it is possible for sold pieces to stay in the show, that is a positive. It is fine to rotate pieces but please go through Holly to do so. Gravity is excited to be having us again and says that the CWSG opening was the best one they had last year. Motion was made by Marcy to hold the Gravity opening on November 10. Members will provide food and wine. Gravity will provide non-alcoholic wine and servers. A list was passed around to sign up to bring food. As new Show chairman, Marcy asked some questions about the carry-over of duties which Debbie S. clarified by reference to the by-laws. Invitations will be ¼ page post card. It was moved by Marva and seconded by Jane that these be mailed to Craftsmen's Guild members in the Central MS area and that each CWSG member receive

10 invitations to mail to her personal choices. This motion will be voted on next month as customary.

Marva suggested that on October 6th to celebrate Spinning and Weaving Week, the Guild demonstrate on the porch. She will provide lunch. VA Patterson will do the publicity. This was made as a motion by Marva and seconded by Hazel. Due to the time frame (no meeting will held before the event), was voted on and passed without the customary publication in the newsletter and delay of one month's time.

Show and Tell:

Melba –MS Soil and Water Conservation District Endowment is raffling a quilt and matching pillow; the winner is to be drawn Jan. 17, 2002. Chances are \$1.00.

Hazel –Work in progress-Holly's challenge in something else beside Pepto Bismol pink. Placemats to go with grandson's very high-end Spode-linen, huck stripe, bound weave stripe in appropriate colors related to Bach's toccata (her musical inspiration). "Plain weave with selvages on linen-it humbled me."

Sandi-"I'm winning the war on procrastination." Three-year-old scarf-tassels put on this year. Also learning to knit.

Margaret-Jackie's crest of the wave pattern silk and rayon scarf and her simple triangle in 5/2 cotton and tencel shawl.

Marva-basket on the loom with cloth to put inside. Scarf-knitted triangle with hidden sparkly beads

Kathy-will be a grandma-smocked outfits for baby boy, including Christening gown, smocked, made out of Spanish tea towels-slip is shadow worked, bottom is grandmothers crochet, several wedding dress pieces of mom and grandmom's sewn in, bib, bonnet. All in an effort to create a family heirloom.

Marcy-fuzzy scarves-Lithuanian project-inch wormed chenille scarf where some of the inch worming was done deliberately.

Nancy-8 harness huck lace linen piece, for no known use as yet. Holly-Theo Moorman end of warp tote bag, sewn by her mother.

LETTER FROM THE PRESIDENT:

We opened the 2001-2002 CWSG year at the September meeting with an exciting program on stimulating creativity, presented by Jill Hammes. Jill shared her personal visual journals and urged us to start our own journals to stimulate creative thinking. We also had a great show and tell—CWSG members were busy this summer!

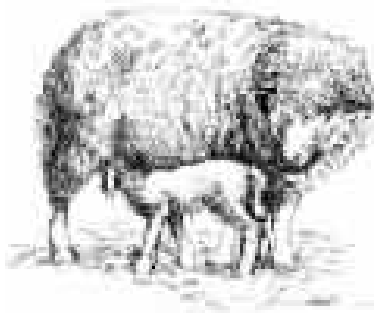
Our first order of business at the meeting, however, was heart-felt prayer led by Lu Harding in remembrance of the victims of the Sept. 11 terrorist attacks. The tragedy and its aftermath are affecting us all in one way or another, so let's keep America and her leaders in our prayers.

I hope you can join us for our annual demonstration at the Pioneer and Indian Festival Oct. 27 and 28. Marva is going to get a canopy for us again this year, and Melba has offered to host our October meeting at her house Saturday evening, immediately following our demonstration.

In the meantime, I am scrambling to begin my Inspirations project for our show at Gravity in Clinton. Do I win the prize for procrastination? I hope to have it on the loom in time for our Pioneer and Indian Festival demo, but this weekend we're going camping

to enjoy this glorious fall weather, so the warping board will have to wait a few more days....

I used my new Fiber3works PCW 4 weaving software to work out my project's design. It was a great help and lots of fun, but there's a serious drawback to using weaving software: it's hard to stop tweaking the draft and colors because changes are so quick and easy. I was forced to stop only when my printer ran out of color. Hope to see you all at the Pioneer and Indian Festival!!



CWSG COMMITTEES FOR 2001-2002

Library: Judith Noble, chair

Spinning/Weaving Week: Marva Goodman, chair

Loom Crawl: Rosina Echols, chair

White Elephant: Kristen Redford, chair

Christmas Tree Acquisition/Decorating at Chimneyville Crafts Festival:

Carolyn Campbell

Newsletter: Anne Hodges, chair

Exhibits/Shows: Marcy Petrini, chair

Scrapbook: Judith Noble, chair

Liaison with Craftsmen's Guild of MS: Debbie Levine

Liaison with Other MS Guilds: Sharon Williams

Liaison with HGA: Marva Goodman

Education: Jill Hammes, chair

Publicity: Carolyn Nichols, chair

Membership: Sandi Tucker, chair

Ways and Means: Barbara Mitchell

Pioneer Day: Lu Harding

Roc Day: Melba Nipper, Debbie Levine, co-chairs

Sheep to Shawl (spring demo day): Kathy Cahren, chair

Spring Fiber Retreat '02: Holly Redford

Hospitality (includes monthly refreshments; finding place for spin-ins):

Hazel Howell

