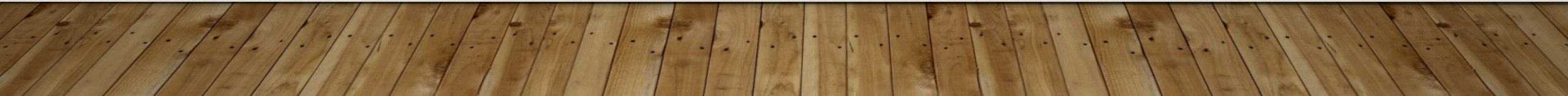


WEAVING ON OPPOSITES

OCTOBER 17, 2020

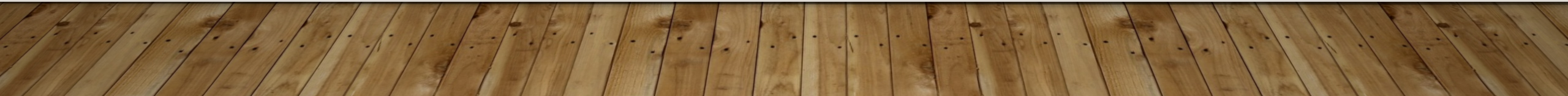


WEAVING ON OPPOSITES – WHAT IS IT?

- An old weaving term that you may stumble upon
- A topic in Robyn Spady's *Heddlecraft* Volume 4, Issue 5 pp 52-53
- A new-to-me topic that enticed exploration

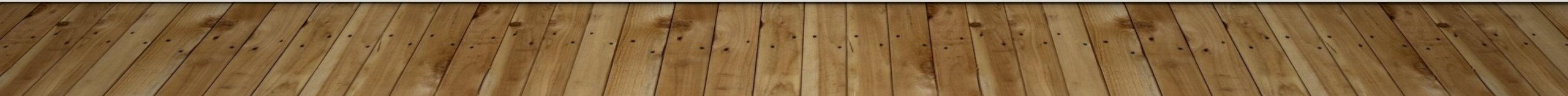
WEAVING ON OPPOSITES – WHAT IS IT *NOT*?

- It's not plain weave (although you do use opposite shafts in plain weave)
- It's not turning a draft (switching threading and treadling)
- It's not Echo and Iris (parallel threading)



SO WHAT THE HECK IS WEAVING ON OPPOSITES?

- A two-pattern weave on four shafts using alternate treadling and two different wefts (primary and alternate) on opposite shaft combinations
- Alternate weft may match the warp OR contrast with primary weft in hue or value
- Basic patterns (for the primary weft) include twills, overshot, or summer and winter
- May or may not include tabby



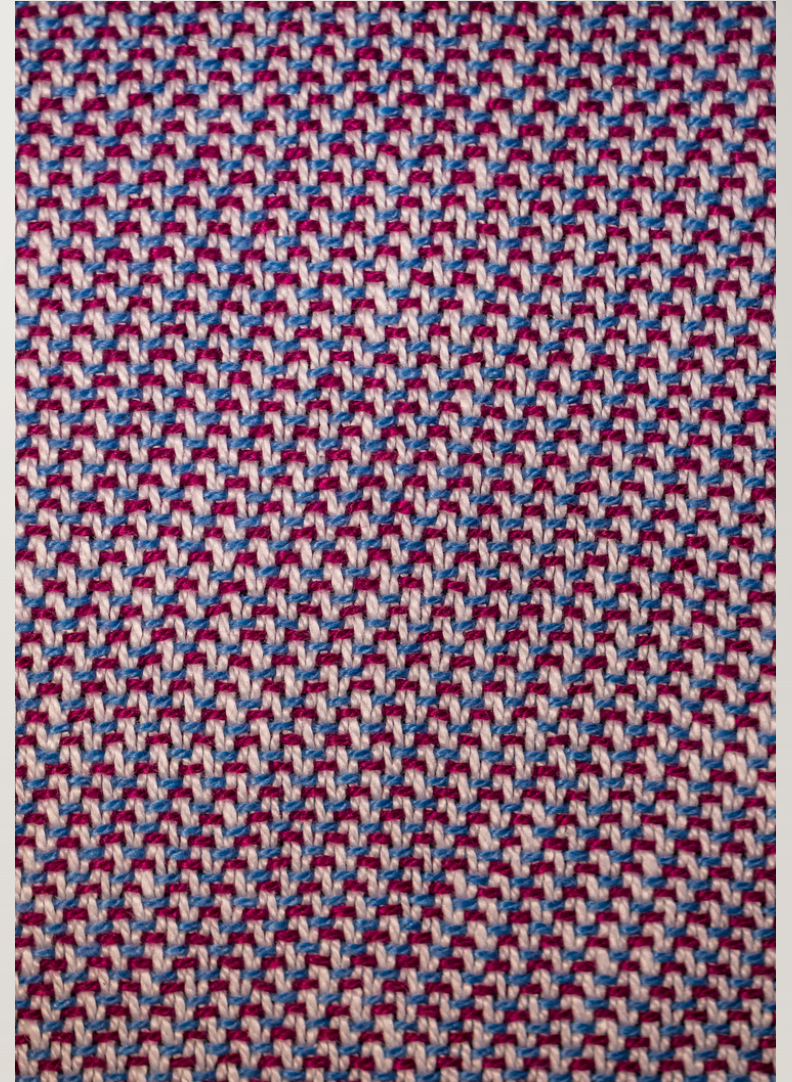
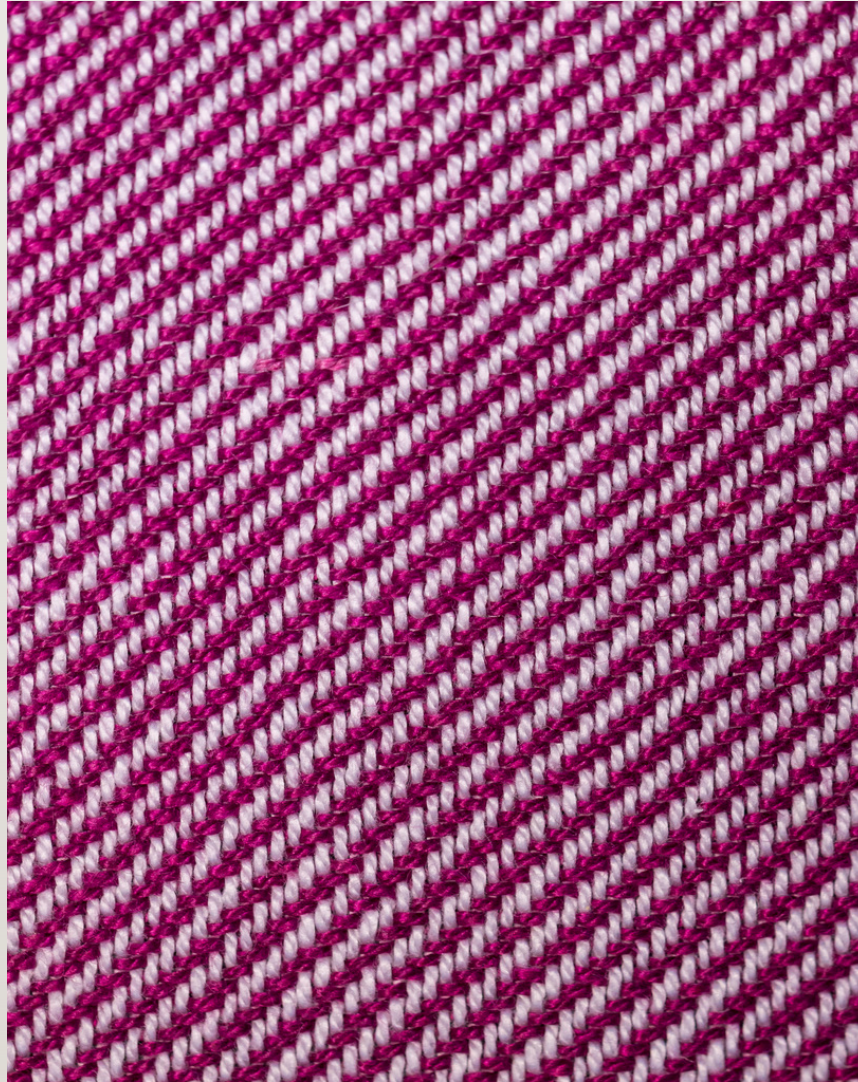
HOW TO FIGURE OUT THE SEQUENCE

Pattern Pick #1 (original pattern)	Pattern Pick #2 (opposite pattern)
Shafts 1 and 2	Shafts 3 and 4
Shafts 2 and 3	Shafts 1 and 4
Shafts 3 and 4	Shafts 1 and 2
Shafts 1 and 4	Shafts 2 and 3

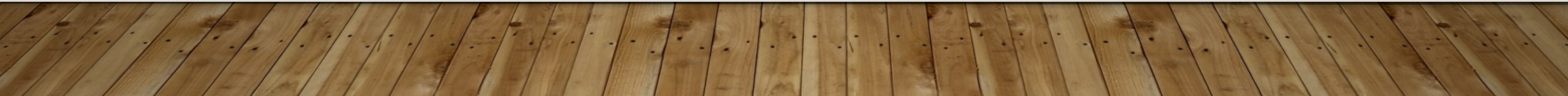
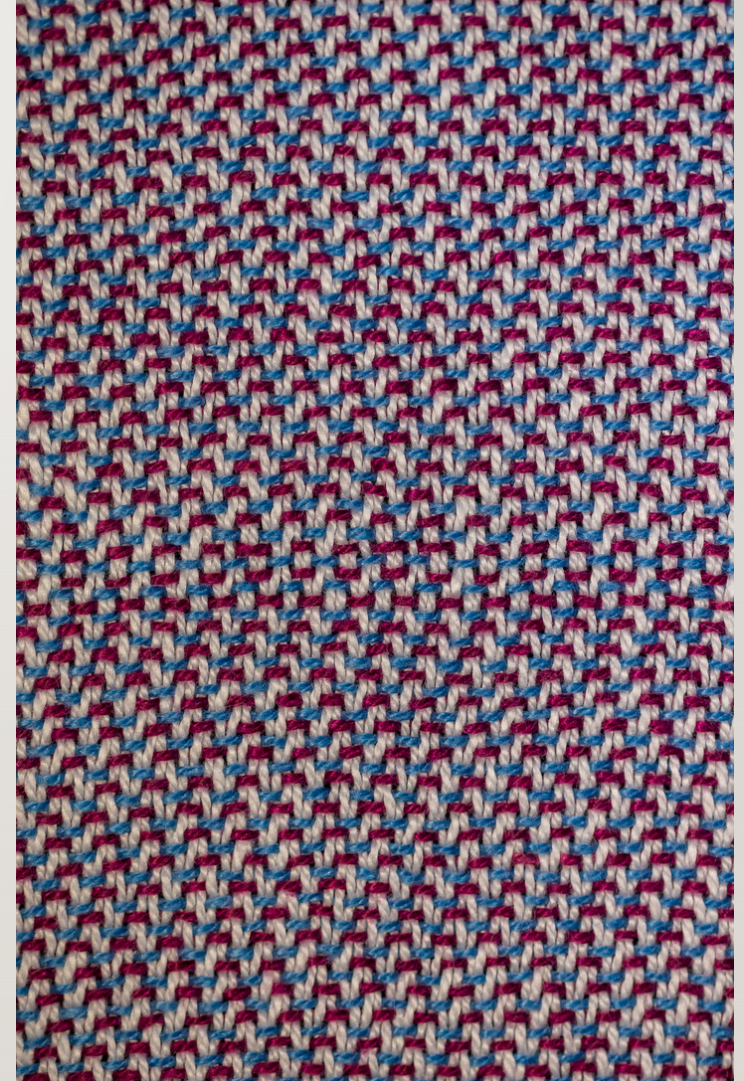
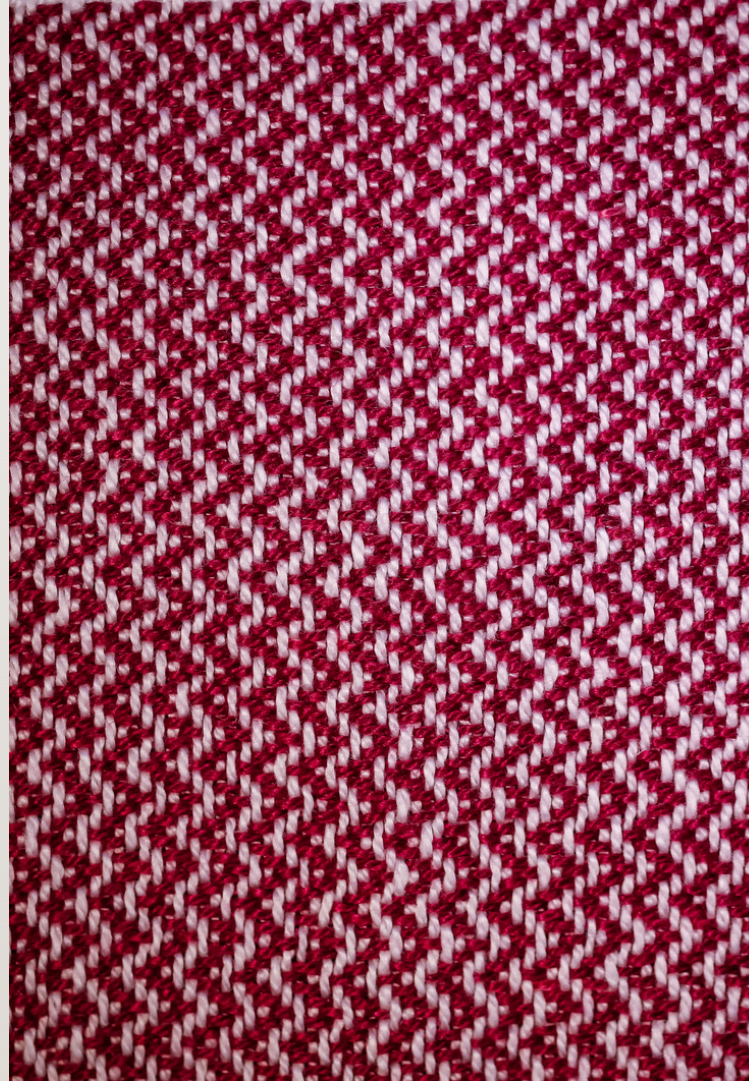
THE SAMPLES (WOVEN ON MY SCHACHT WOLF PUP)

- Warp is 5/2 perle cotton (white) set at 18 epi
- Weft includes:
 - 5/2 perle cotton (hot pink, blue, white for tabby)
 - 3/2 perle cotton (hot pink, blue)
 - Novelty sparkled weft

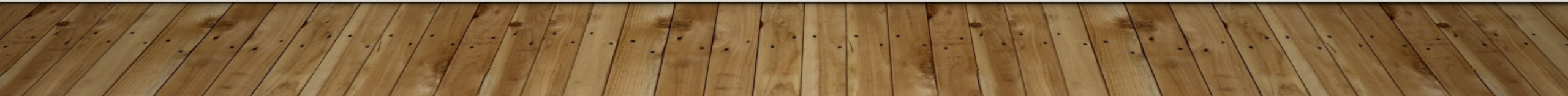
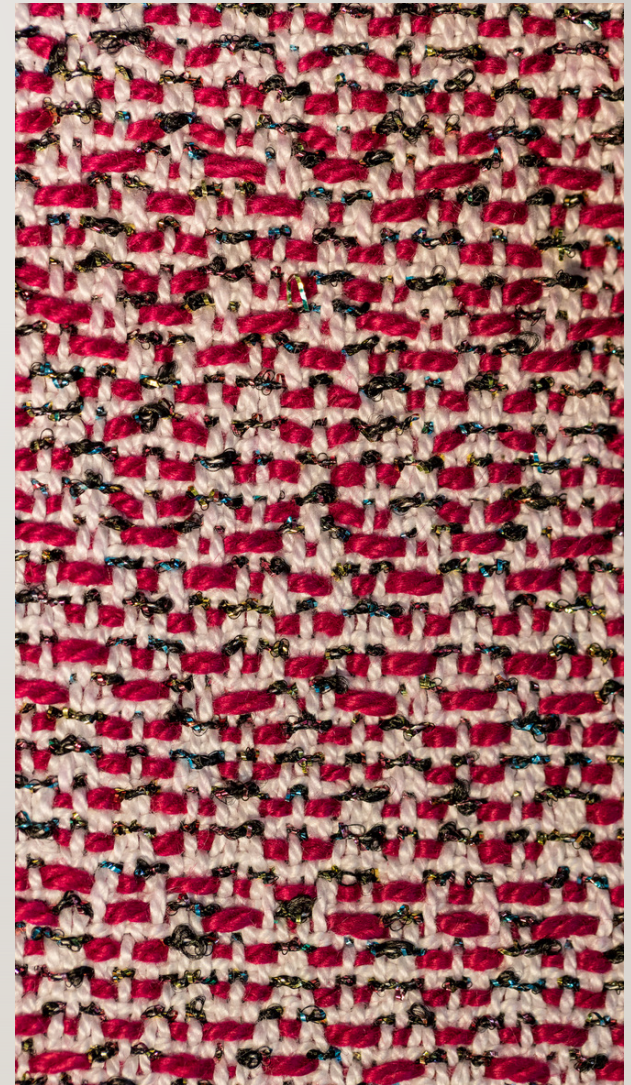
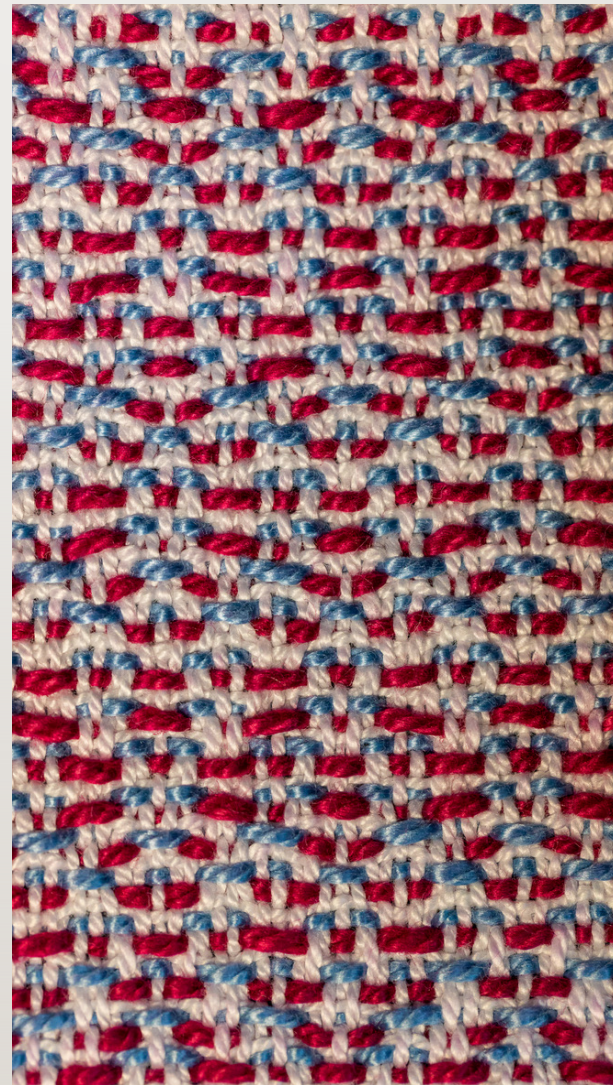
WEAVING ON
OPPOSITES
USING 2/2
STRAIGHT TWILL



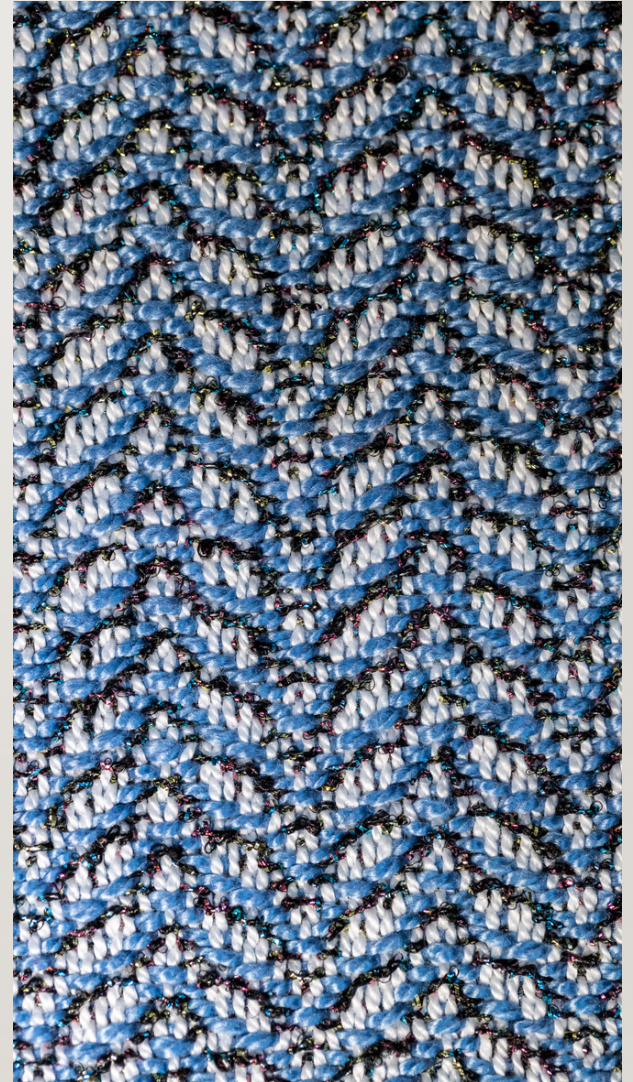
WEAVING ON OPPOSITES USING 2/2 POINT TWILL



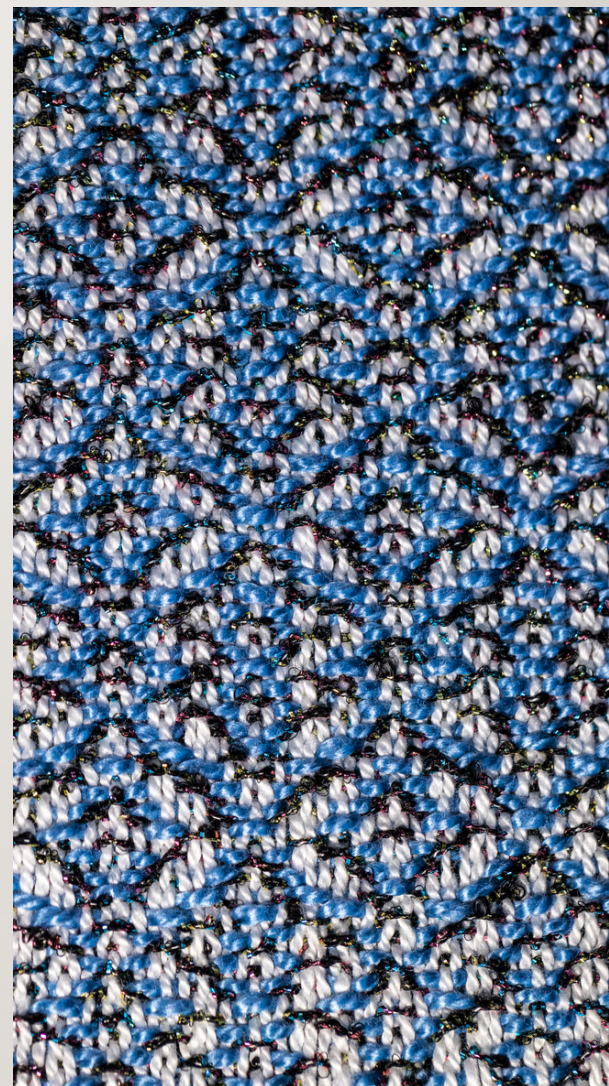
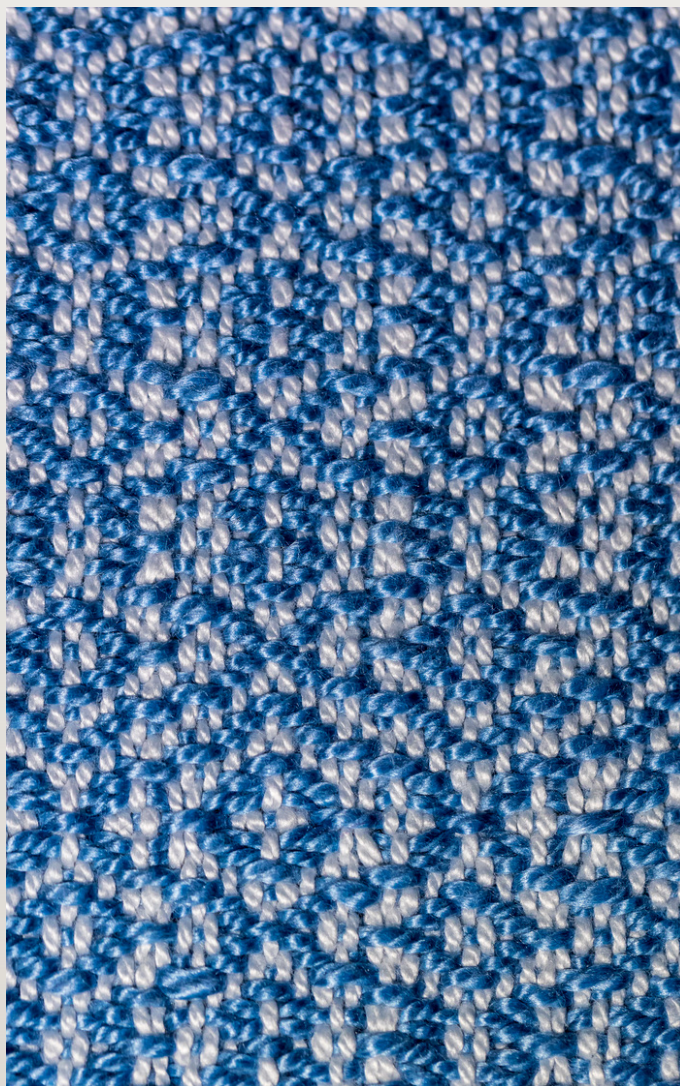
WEAVING ON
OPPOSITES
USING
OVERSHOT
(PERIWINKLE FROM
M. P. DAVISON)



PERIWINKLE
TREADLING II
(NO TABBY)



PERIWINKLE
TREADLING III
(NO TABBY)



HINTS FROM ROBYN

- Contrast in value between primary and alternate wefts is important
- Resulting fabric is heavier (because of alternate wefts) than one using standard treadling
- Wefts can be different sizes (e.g., 3/2 perle cotton, novelty metallic)
- If tabby used, throw *one* tabby pick after *both* wefts (not after each weft)

THOUGHTS FROM BETH

- *Heddlecraft* is a GREAT resource!
- Keep your eyes open to intriguing terms and new ideas
- Sign up to give a guild program – it's a GREAT way to learn something new!
- Don't wait until one week before the program to start sampling!
- Spouses make GREAT photographers!

QUESTIONS?

